



39 Neptune Drive, Bridlington, YO16 4EF

Asking Price £85,000



39 Neptune Drive, Bridlington, YO16 4EF

Asking Price £85,000



Exterior

Modern and well-maintained block of flats, featuring spacious living areas.

Communal Hallway

Bright and welcoming communal hallway with plenty of natural light.

Lounge

A bright front-facing lounge offering comfortable living space with room for a small dining area.

Kitchen

A front-facing kitchen conveniently located just off the lounge, offering a practical and functional layout.

Hallway

A central hallway providing access to all rooms, featuring a useful storage cupboard with space for a washing machine.

Bathroom

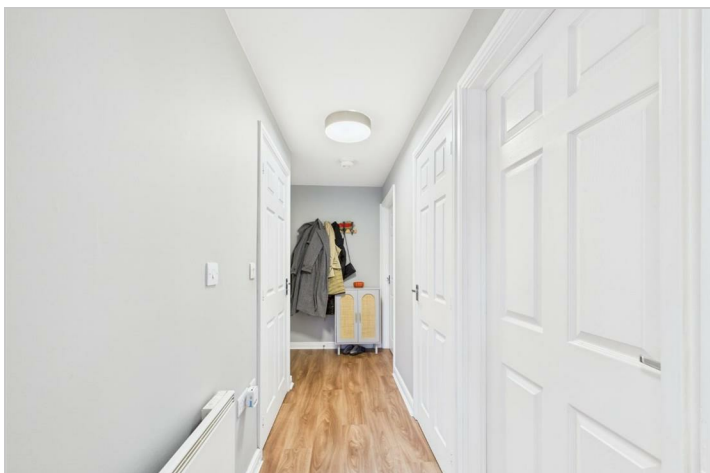
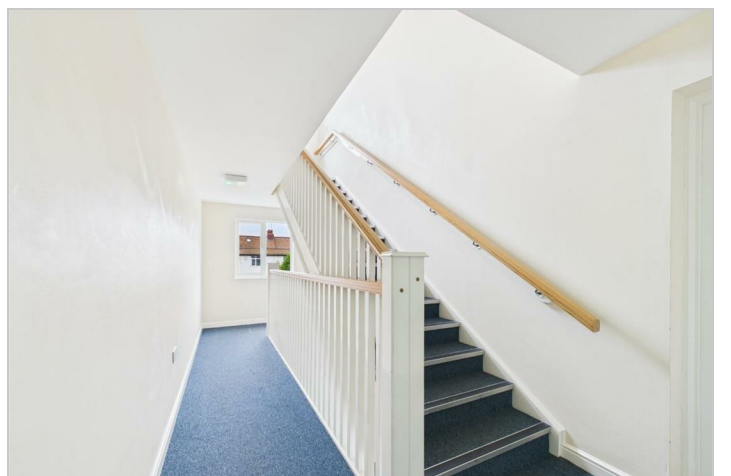
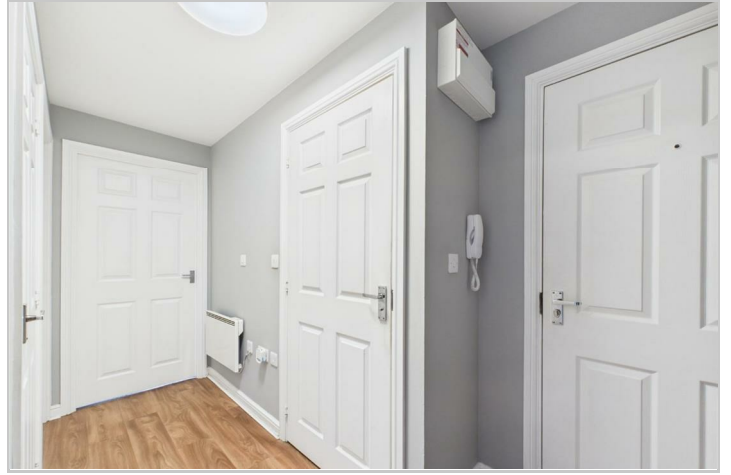
A centrally located bathroom fitted with a shower over bath, wash basin, and WC.

Bedroom 1

A spacious rear-facing double bedroom offering ample room for storage and comfortable living space.

Bedroom 2

A rear-facing second bedroom offering a quiet and versatile space.



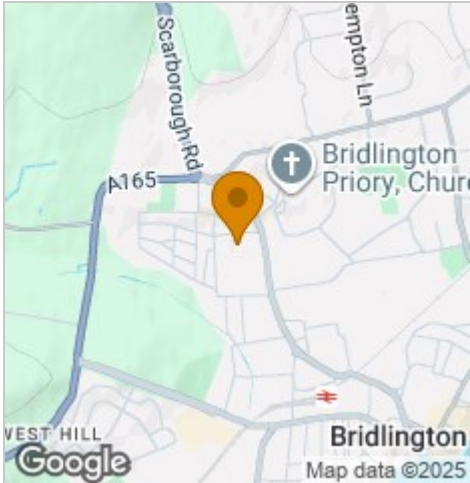
Road Map



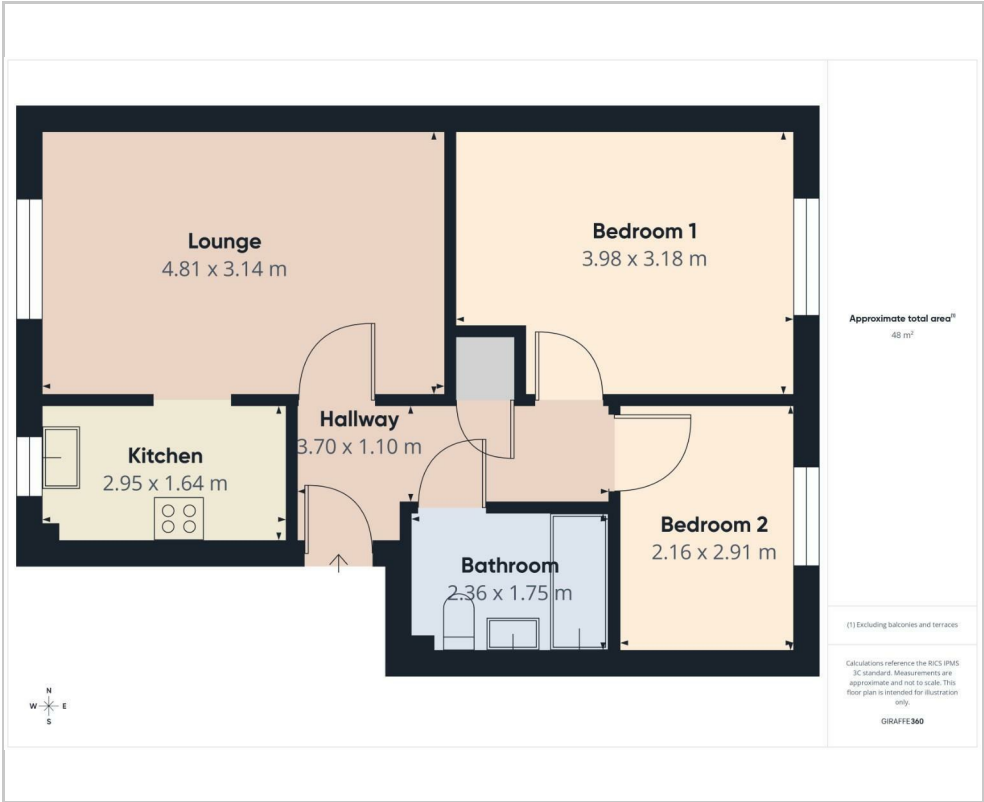
Hybrid Map



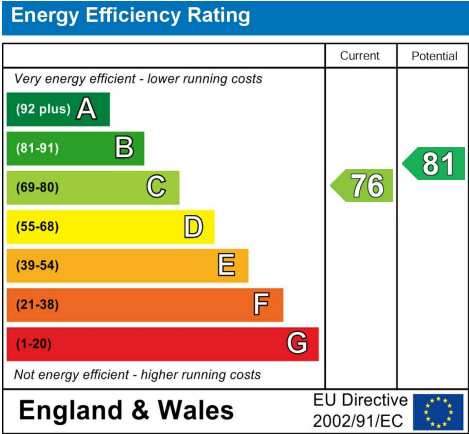
Terrain Map



Floor Plan



Energy Efficiency Graph



Viewing

CALL US ON 01262 228283 FOR A VIEWING